

Slimline Dual View Camera

WC1750 Water Well Camera

See what you're missing.

Improve downhole inspections by seeing two views.

This slimline camera has a maximum outside diameter of only 1.750 inches. Its small design is perfect for inspecting small boreholes, monitoring wells, and in some cases, getting between the casing and pump.



PRODUCTIVE

- » Designed to improve downhole inspections by allowing the operator to see two views of the inside of water wells, boreholes and other vertical shafts

VERSATILE

- » Optional control unit adapter permits the operation of the camera from other manufacturers' control units

INDUSTRIOUS

- » Camera rotates 360 degrees continuously without the use of high pressure rotating seals

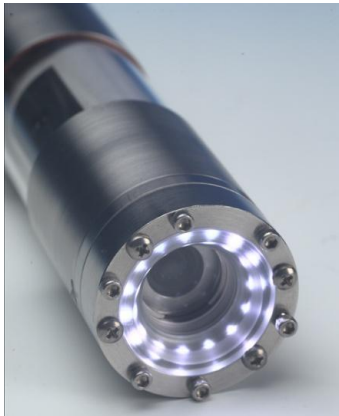
Slimline Dual View Camera

WC1750 Water Well Camera

See what you're missing.

Standard Features:

- » 480 TV Line Horizontal Resolution
- » ¼-inch Interline CCD
- » 768(H) X 494(V)
- » Hermetically sealed and charged with up to 15 psi of nitrogen gas
- » 2.3mm lens with a maximum field of view of 86 degrees (side and down view)
- » Stainless steel watertight underwater housing
- » Minimum illumination of 1 lux @ f1.2
- » 1.750-inch maximum outside diameter
- » 22 inches long
- » Weight less than 6 lbs
- » Color
- » Operational up to 180°F
- » Internal diagnostic check system



ARIES
INDUSTRIES, INC.

Corporate Office

550 Elizabeth Street
Waukesha, WI 53186
Toll Free: 800-234-7205
Phone: 262-896-7205
Fax: 262-896-7099

Western Regional

5748 E. Shields Avenue, Suite 101
Fresno, CA 93727
Toll Free: 800-671-0383
Phone: 559-291-0383
Fax: 559-291-0463

Southern Regional

1441 SW 10th Avenue, Unit 202
Pompano Beach, FL 33069
Toll Free: 800-327-4346
Phone: 954-785-5540
Fax: 954-785-5014

Aries Canada Ltd.

1081 Meyerside Drive, Units 1&2
Mississauga, Ontario
Canada L5T-1M4
Toll Free: 877-730-7010
Phone: 905-795-7913
Fax: 905-795-7905