

# BT9700

## Water Well Inspection Camera

See what you're missing.

**Technically advanced camera ensures superior acquisition of images and evaluation of well conditions.**

Using the BT9700 camera the operator can selectively target a downhole view or a Side View of the casing wall.

The camera's single-module design allows it to tilt off-center and zoom in both views. This unique operating benefit produces clear, quality images to more accurately evaluate difficult conditions.



BT9700 camera with LED ringlight



BT9700 camera with LED lighthead

### PRODUCTIVE

- » Examine wall casing, infiltration, screens, gravel packs, encrustations, deterioration or blockages
- » LED lighthead for bright, clear downhole viewing
- » LED ringlight for locating tools and pumps, and other lost objects
- » Adaptable for use with some geophysical logging equipment

### VERSATILE

- » Easy inspection of large diameter wells with high-intensity lights
- » Models for NTSC or PAL format
- » Adapts to most CCTV inspection systems
- » Auto Focus and Iris has manual override for clear viewing in difficult lighting conditions

### DURABLE

- » Stainless steel construction with no external moving parts
- » On-screen camera diagnostics
- » Hermetically sealed and nitrogen-charged to eliminate humidity and condensation for clear viewing.

# BT9700

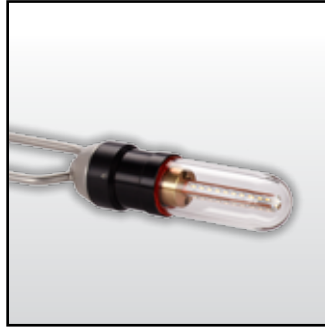
## Water Well Inspection Camera

See what you're missing.

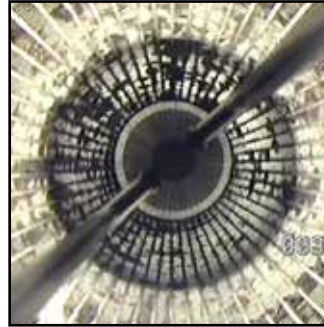
### Pinpointing problems to reduce costly and unnecessary repairs.



Unique pan and tilt camera movement provides superior well casing examination



LED lighthouse, available in two lengths, for clear downhole viewing



Crystal clear images with 10X optical zoom and 530 TV lines horizontal resolution

### Camera Operation:

- » Camera uses a single camera module for simple trouble-free dual view operation
- » 90° Side View with +20/-15 degree tilt
- » Down view radial tilt and zoom
- » 360° continuous rotation with three speeds
- » 3.5 inch (89 mm) camera diameter for inspecting boreholes of 4 inch (102 mm) minimum diameter, or larger
- » Depths to 5,000 feet (1524 m)

### Controls and Features:

- » LED Side View light
- » Down view LED ringlight, or LED lighthouse available in two lengths: 18 inch and 24 inch (457 mm and 610 mm)
- » Auto Focus and Iris with manual override
- » Low-lighting "StarLite" setting
- » Selectable white balance modes: Automatic, incandescent, or LED lighting
- » On-screen color bar display

### Specifications:

- » Length: 22 inches (560 mm); Weight: 20 lb (9 kg)
- » 10X optical zoom
- » 530 TV lines horizontal resolution
- » Minimum illumination of 1 lux @f1.8
- » Color analog video, NTSC or PAL
- » Maximum temperature rating of 167°F (75° C)

Note: Specifications and features subject to change.



**ARIES**  
INDUSTRIES, INC.

#### Corporate Office

550 Elizabeth Street  
Waukesha, WI 53186  
Toll Free: 800-234-7205  
Phone: 262-896-7205  
Fax: 262-896-7099

#### Western Regional

5748 E. Shields Avenue, Suite 101  
Fresno, CA 93727  
Toll Free: 800-671-0383  
Phone: 559-291-0383  
Fax: 559-291-0463

#### Southern Regional

561 Thornton Road, Suite D  
Lithia Springs, GA 30122  
Toll Free: 800-327-4346  
Phone: 770-941-1144  
Fax: 770-941-1141

#### Aries Canada Ltd.

1081 Meyerside Drive, Units 1&2  
Mississauga, Ontario  
Canada L5T-1M4  
Toll Free: 877-730-7010  
Phone: 905-795-7913  
Fax: 905-795-7905